



PARTS CATALOG **2021**

ABOUT US ABOUT US ABOUT US



IT US ABOUT US ABOUT US



Who We Are

We aren't new anymore. You've seen us before.

You know that when you call Ellefson Off Highway you are going to talk to a knowledgeable, friendly staff.

You know you are going to deal with a sales team who have been trained by the best and will work hard to get you what you need.

You know that when you receive a part or component from Ellefson Off Highway's shop it will be exactly what you want.

We want you to know that as we get older, we get better.

Give Ellefson Off Highway a call for all your Caterpillar and Komatsu parts and component needs.

SCAN HERE to learn more about Ellefson Off Highway!



TRUCKS TRUCKS TRUCKS



FRONT CORNERS



TRANSMISSIONS



REAR SUSPENSIONS



FINAL DRIVES



CABS

This catalog shows a small selection of the Caterpillar and Komatsu Haul Truck parts and components that Ellefson Off Highway keeps in stock.
Call us today for all your needs.



SCAN HERE to see how we bring in the big trucks!

TRUCKS TRUCKS TRUCKS

Ellefson Off Highway knows haul trucks. From cylinders to powertrain and everything in between—give us a call to keep your fleet up and running!



WHEEL MOTORS



ALTERNATORS



HOIST CYLINDERS



TORQUE CONVERTERS AND DIFFERENTIALS

DOZERS DOZERS DOZERS

This catalog shows a small selection of the Caterpillar Bulldozer parts and components we keep in stock.



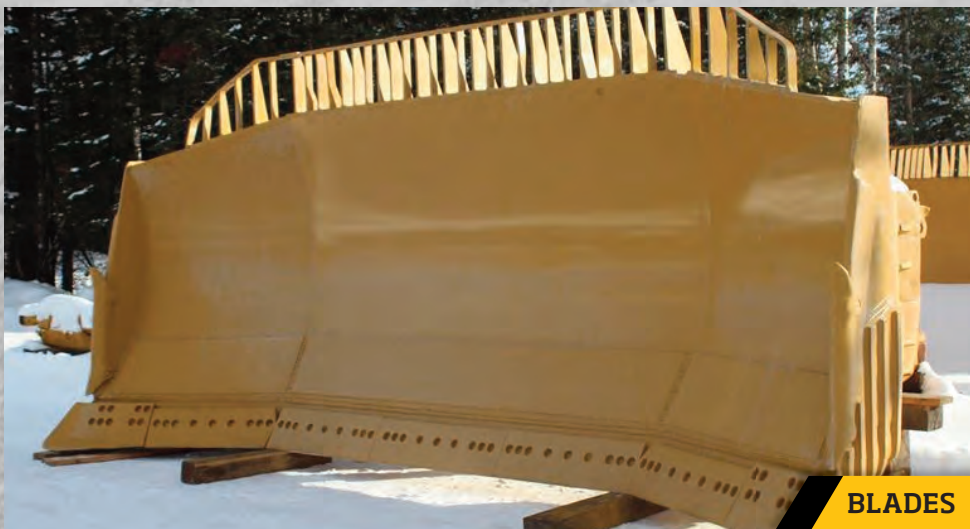
TRANSMISSIONS



TRACK FRAMES



FRAMES



BLADES



FINAL DRIVES



PIVOT SHAFTS

DOZERS DOZERS DOZERS



YOKES



ENGINES



TILT CYLINDERS



TRACK FRAMES



RIPPERS

Ellefson Off Highway specializes in track frames. Whether you need D9, D10 or D11s, we custom build our track frames to suit our customer's specific needs. *Call us today for a quote.*

SCAN HERE to see a D11R coming in to EOH!



LOADERS LOADERS LOADERS



BOOM & LINKS



FINAL DRIVES



LIFT & TILT CYLINDERS



DIFFERENTIALS



TRANSMISSIONS

This catalog shows a small selection of the Caterpillar and Komatsu Wheel Loader parts and components we keep in stock.



SCAN HERE to watch a loader heading off to its new home!

LOADERS LOADERS LOADERS



ROCK BUCKETS

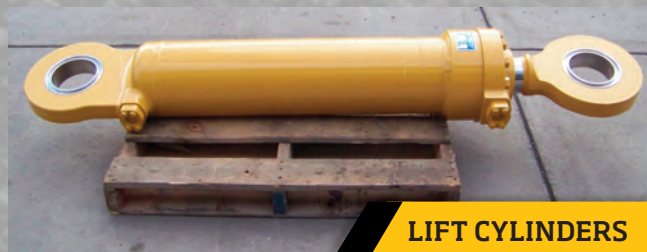


VALVES



RIMS

Cylinders, attachments, powertrain and sheet metal.
From big to small **Ellefson Off Highway**
has it all. Call us today!



LIFT CYLINDERS

SUPPORT EQUIPMENT SUPPLY



TRANSMISSIONS



BRAKES



CYLINDERS



DRAWBARS

Ellefson Off Highway also sells parts and components for support equipment. If your grader is down or you are looking for replacement parts for your excavator, *call us today.*

PORT EQUIPMENT SUPPORT



FRONT AXLE GROUPS



BRACKETS



CIRCLE /DRAW BAR ASSYS.

This catalog shows a small selection of the Support Equipment parts and components we keep in stock.



BLADES

SCAN HERE to watch one of our graders in action!



REBUILD REBUILD REBUILD



Ellefson Off Highway rebuilds hundreds of components every year. Each component is disassembled, inspected, and rebuilt to OEM specifications. Our goal is to always have satisfied customers willing to return for repeat business, which is why we offer an industry-leading warranty to back our rebuilt components.



SCAN HERE to view our full inventory!

REBUILD REBUILD REBUILD



Kevin Sotzsky
SHOP FOREMAN

Working as a mechanic for the last 20 years has provided Kevin with the experience and expertise to get all of your questions answered.



Doug Mertens
SERVICE MANAGER

With over 40 years in the mining industry as a mechanic, and holding strong backgrounds in electrical, machining, welding and troubleshooting, Doug is a leader in our shop and the right man for any job.



Mark Anderson
WELDER/MECHANIC

With over 20 years in the industry, Mark is one of our "go to guys" for tear-down and special projects.



Mark Hartshorn
WELDER/FABRICATOR

With many years of experience in our area mining companies, Mark is a great addition to our team.



Paul Larson
SHOP LABORER

A true jack of all trades, Paul is there to help with all projects big or small. He is the EOH handy-man and keeps everything in top shape.



Drake Patrow
MECHANIC

With over 4 years at EOH, Drake is a key employee in assisting with component rebuilding, field work and processing shop orders.



Matt Petersen
MECHANIC

Coming in with years of experience as a mechanic and troubleshooter with the USAF, Matt now works in our component rebuild facility.



Tony Shavor
MECHANIC

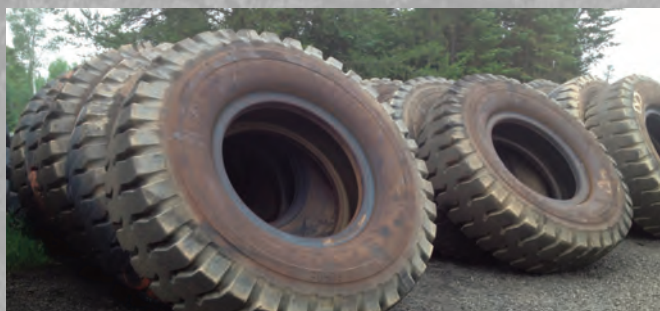
Tony comes to EOH with 13 years as a CAT factory authorized technician and previous field experience with Komatsu. He works in our component rebuild facility.



Mark Troumbly
MECHANIC

A top mechanic with over 40 years in the field, Mark specializes in our axle rebuilds. Mark is as old school as it gets and will work steadily until the job is finished and issue free.

TIRES TIRES TIRES TIRES



Trucks

46/90R57
40.00R57
40.00X57
42/90R57
37.00R57
36.00R51
36.00X51
33.00R51
33.00X51
27.00R49
27.00X49
24.00R35

Loaders

58/85X57
53.5/85X57
52/80X57
50/65R51
50/65X51
45/65R45
45/65X45
35/65R33
35/65X33
29.5R29
29.5X29
26.5R25
26.5X25
23.5R25
23.5X25

Parts listed are only a small selection of
our available inventory.



Craig Kubasta

SALES MANAGER

With years of experience and strong communication and marketing skills, Craig oversees sales at our North Dakota division.

Office 218.471.7000
Cell 218.966.6602
craigk@offhighway.com



Cody Matsen

SALES MANAGER

Now with over 11 years in the industry, Cody oversees our Iron, MN sales operations and heads up our component pricing and advertising.

Office 218.471.7000
Cell 218.966.1166
codym@offhighway.com



Lee Adkisson

SALES REPRESENTATIVE

Coming from the service side, Lee brings a wealth of knowledge about the products he sells. In the past few years Lee has built a strong global customer base.

Office 218.471.7000
Cell 218.966.8455
leea@offhighway.com



Jared Jenstead

SALES REPRESENTATIVE

The newest member of our sales team, now in his second year with Ellefson Off Highway, Jared has proven he has the drive and knowledge to help his customers.

Office 218.471.7000
Cell 218.410.3668
jj@offhighway.com




Ellefson Off Highway

8906 HIGHWAY 37
IRON, MINNESOTA 55751

Office 218.471.7000
FAX 218.471.7001

info@offhighway.com
www.offhighway.com



218.471.7000 » offhighway.com